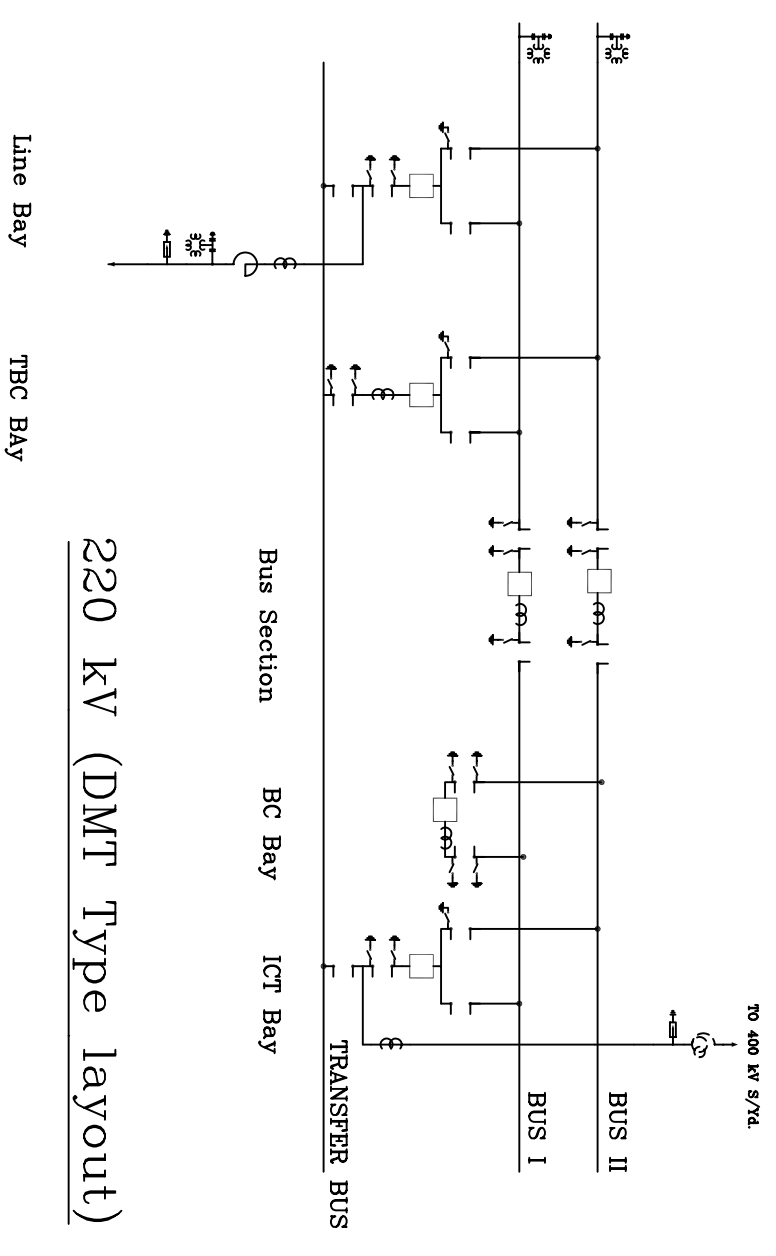


765KV & 400KV (I-type layout)

Quantity to be filled against B.II of format as per above SLD
B.II.1.1

- (i) Line Bay - 5 Sets
- (ii) Transformer Bay (3-ph. bank for 400 kV and 3 X 1-Ph. bank (with 1 no. spare unit) for 765 kV) - 3 Sets
- (iii) Bus Reactor Bay (3-ph. bank for 400 kV and 3 X 1-Ph. bank (with 1 no. spare unit) for 765 kV) - 1 Set
- (iv) Spare Bay (Future) - 2 Sets
- (v) Re-oriented Line bay - 1 Set
- (vi) Line Reactors - 3 Sets
- (vii) Bus Work (For Two diameters) - 3 Sets
- (viii) Extension work for any feeder in existing half dia. - Nil



220 kV (DMT Type layout)

Quantity to be filled against C.II of format as per above SLD
C.II.1.0

- (i) Line Bay - 1 Set
- (ii) Transformer Bay - 1 Set
- (iii) TBC Bay - 1 Set
- (iv) BC Bay - 1 Set
- (v) Bus Work(For Three bays) - 2 Sets
- (vi) Bus Section - 1 Set